

## Linear Regression - Con

### Line of best fit since February 1st

The REG Procedure  
Model: MODEL1  
Dependent Variable: Con

<b>Number of Observations Read</b>	18
<b>Number of Observations Used</b>	18

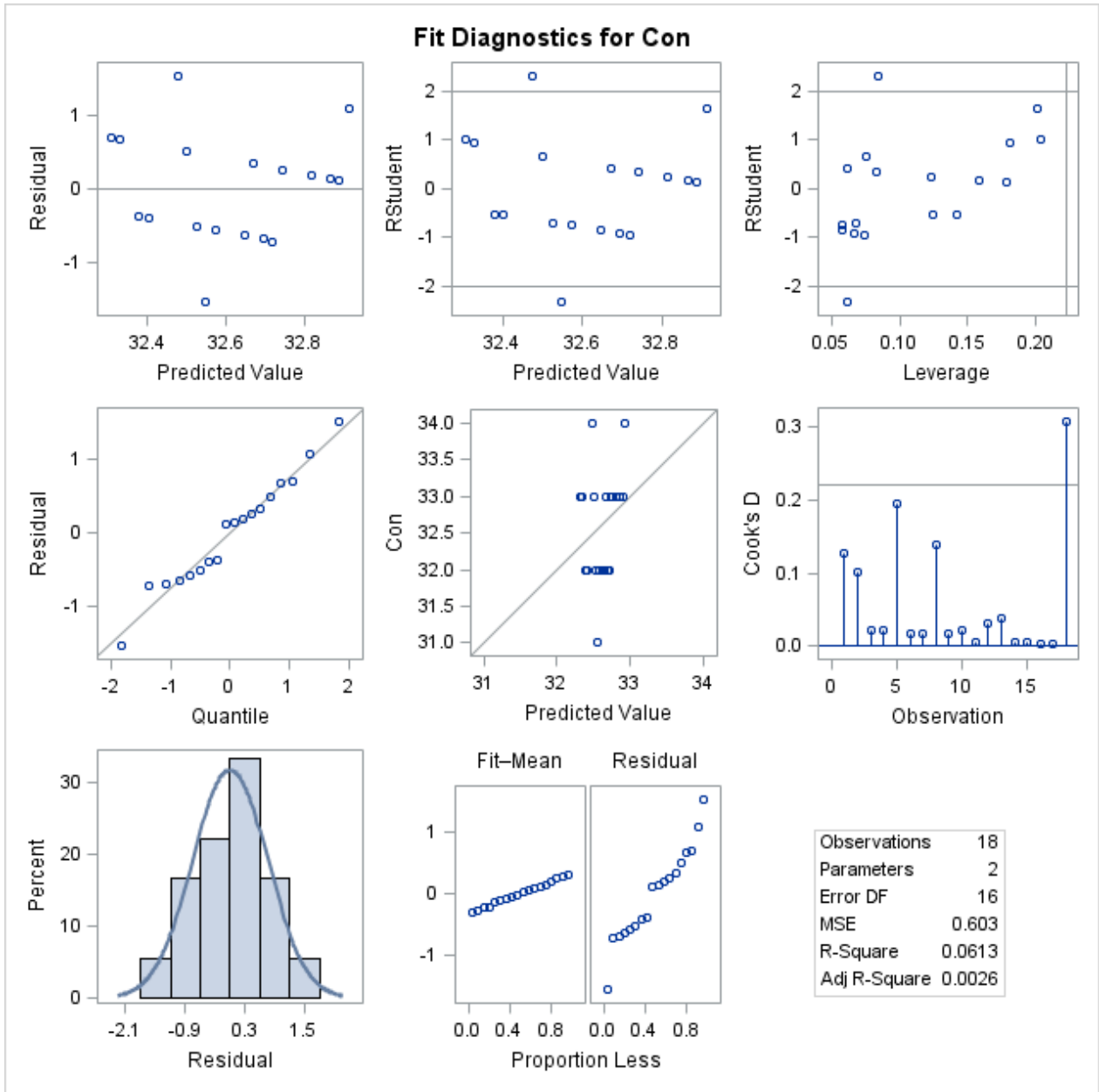
Analysis of Variance					
Source	DF	Sum of Squares	Mean Square	F Value	Pr > F
<b>Model</b>	1	0.62966	0.62966	1.04	0.3221
<b>Error</b>	16	9.64812	0.60301		
<b>Corrected Total</b>	17	10.27778			

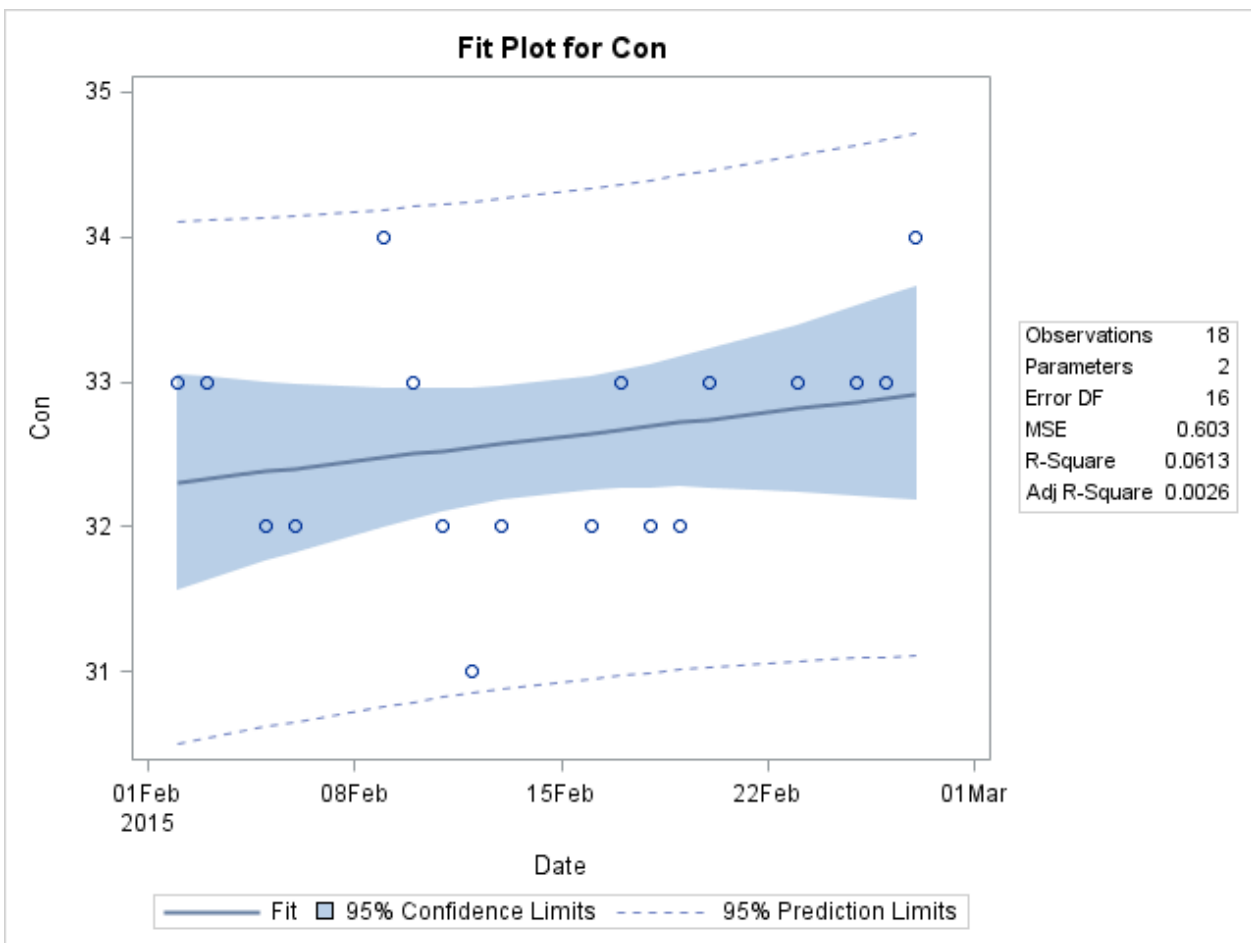
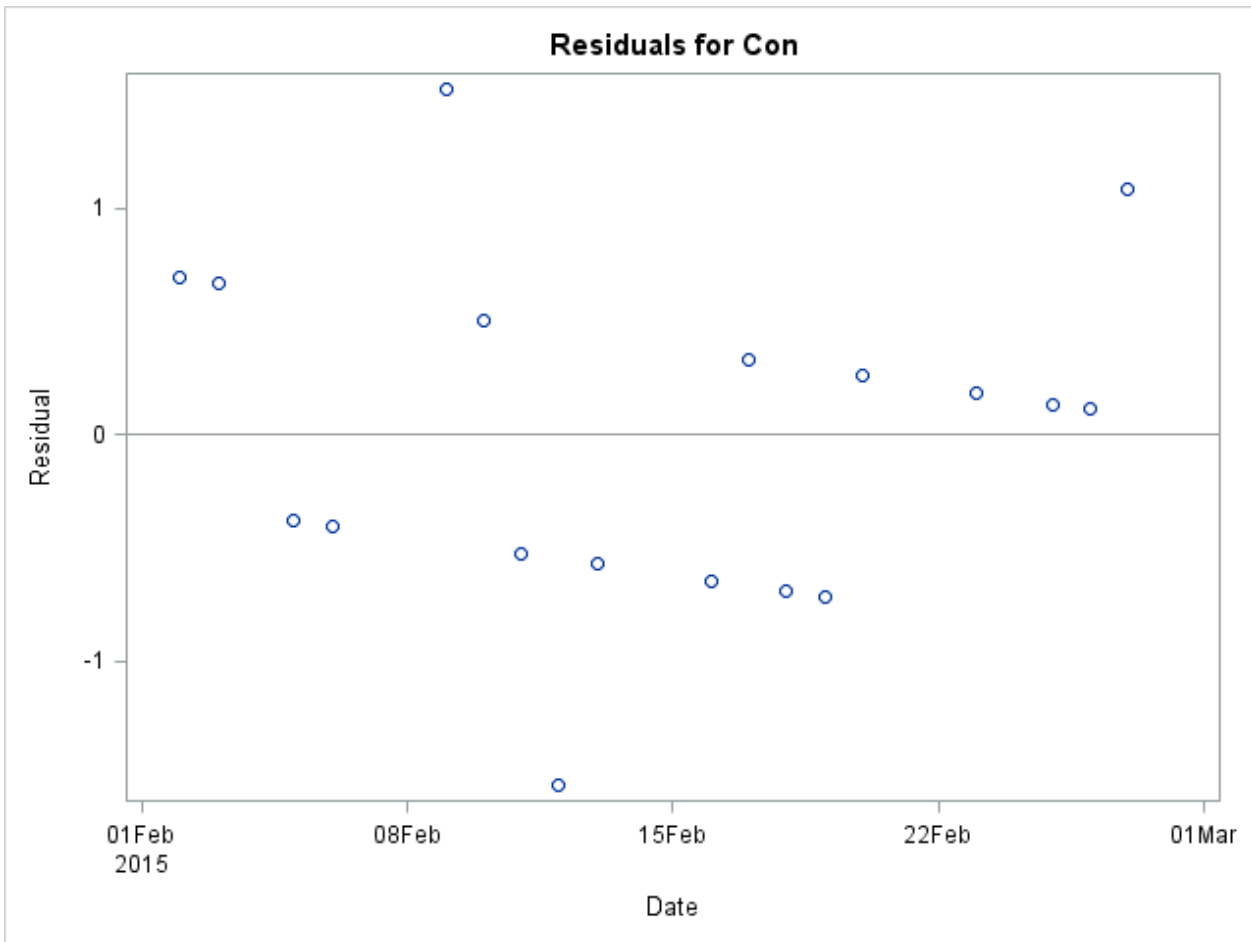
<b>Root MSE</b>	0.77654	<b>R-Square</b>	0.0613
<b>Dependent Mean</b>	32.61111	<b>Adj R-Sq</b>	0.0026
<b>Coeff Var</b>	2.38120		

Parameter Estimates					
Variable	DF	Parameter Estimate	Standard Error	t Value	Pr >  t
<b>Intercept</b>	1	-457.06722	479.20395	-0.95	0.3544
<b>Date</b>	1	0.02432	0.02380	1.02	0.3221

### Linear Regression - Con Line of best fit since February 1st

The REG Procedure  
Model: MODEL1  
Dependent Variable: Con







**Linear Regression - Lab**  
**Line of best fit since February 1st**

The REG Procedure  
 Model: MODEL1  
 Dependent Variable: Lab

<b>Number of Observations Read</b>	19
<b>Number of Observations Used</b>	19

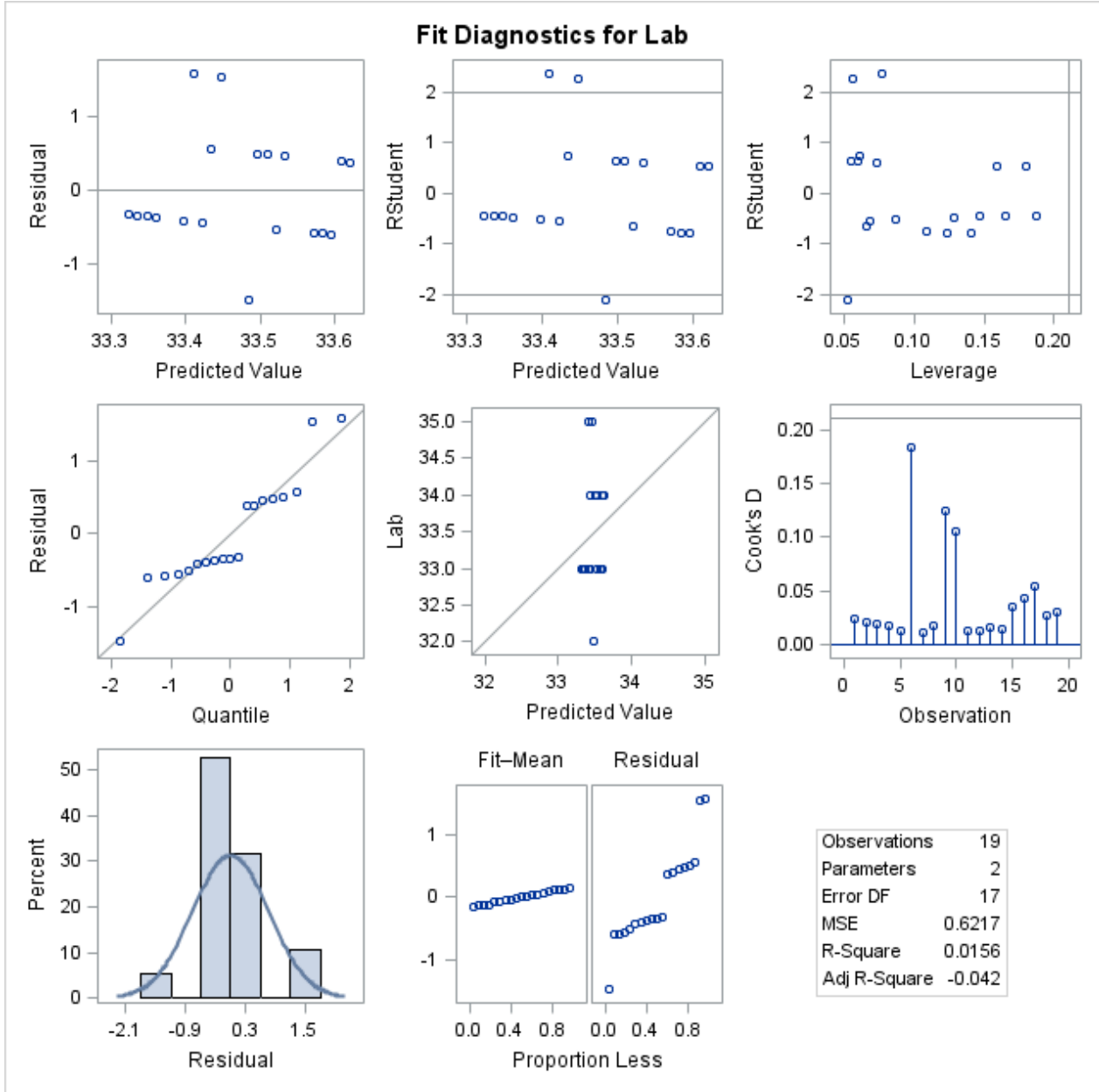
Analysis of Variance					
Source	DF	Sum of Squares	Mean Square	F Value	Pr > F
<b>Model</b>	1	0.16755	0.16755	0.27	0.6104
<b>Error</b>	17	10.56930	0.62172		
<b>Corrected Total</b>	18	10.73684			

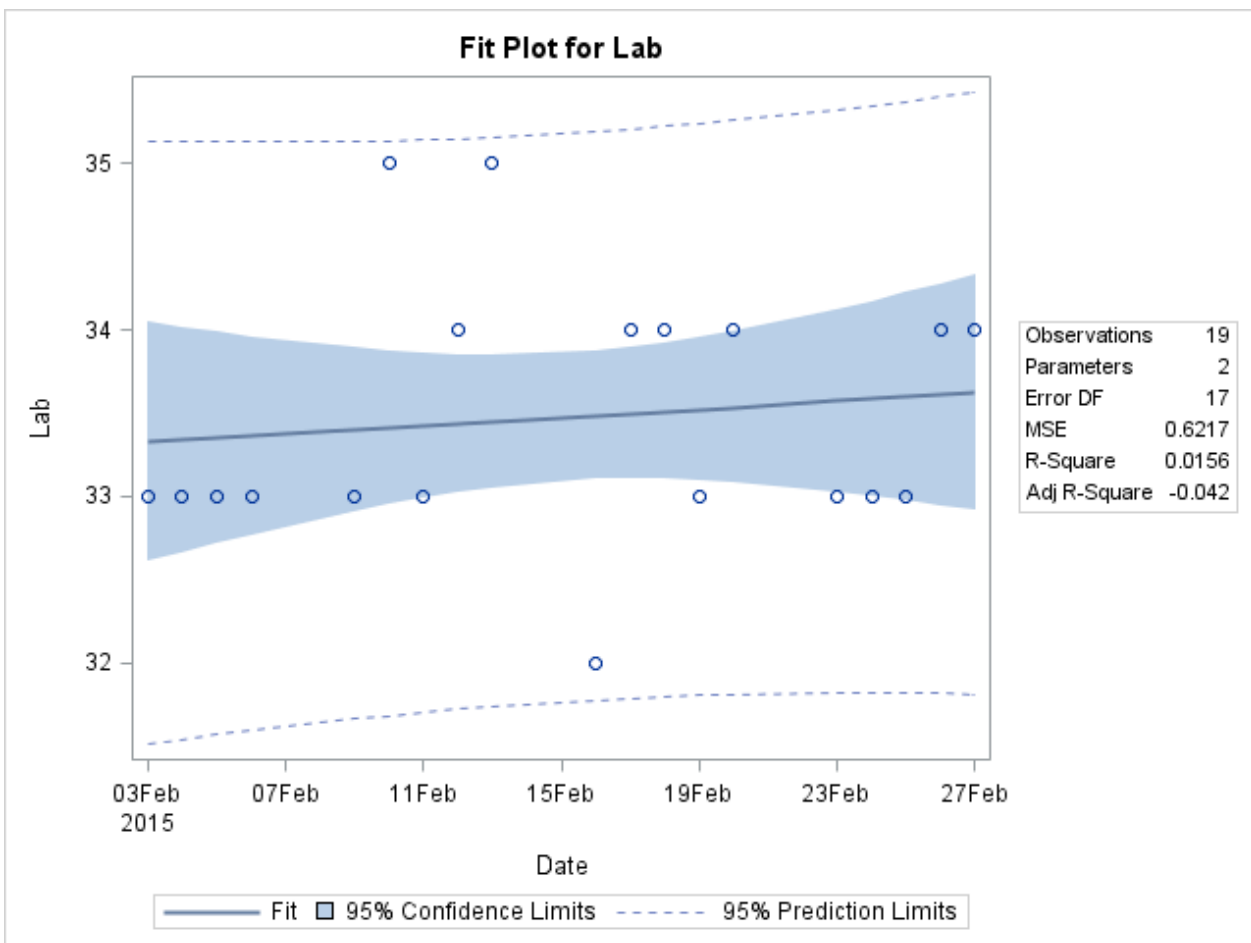
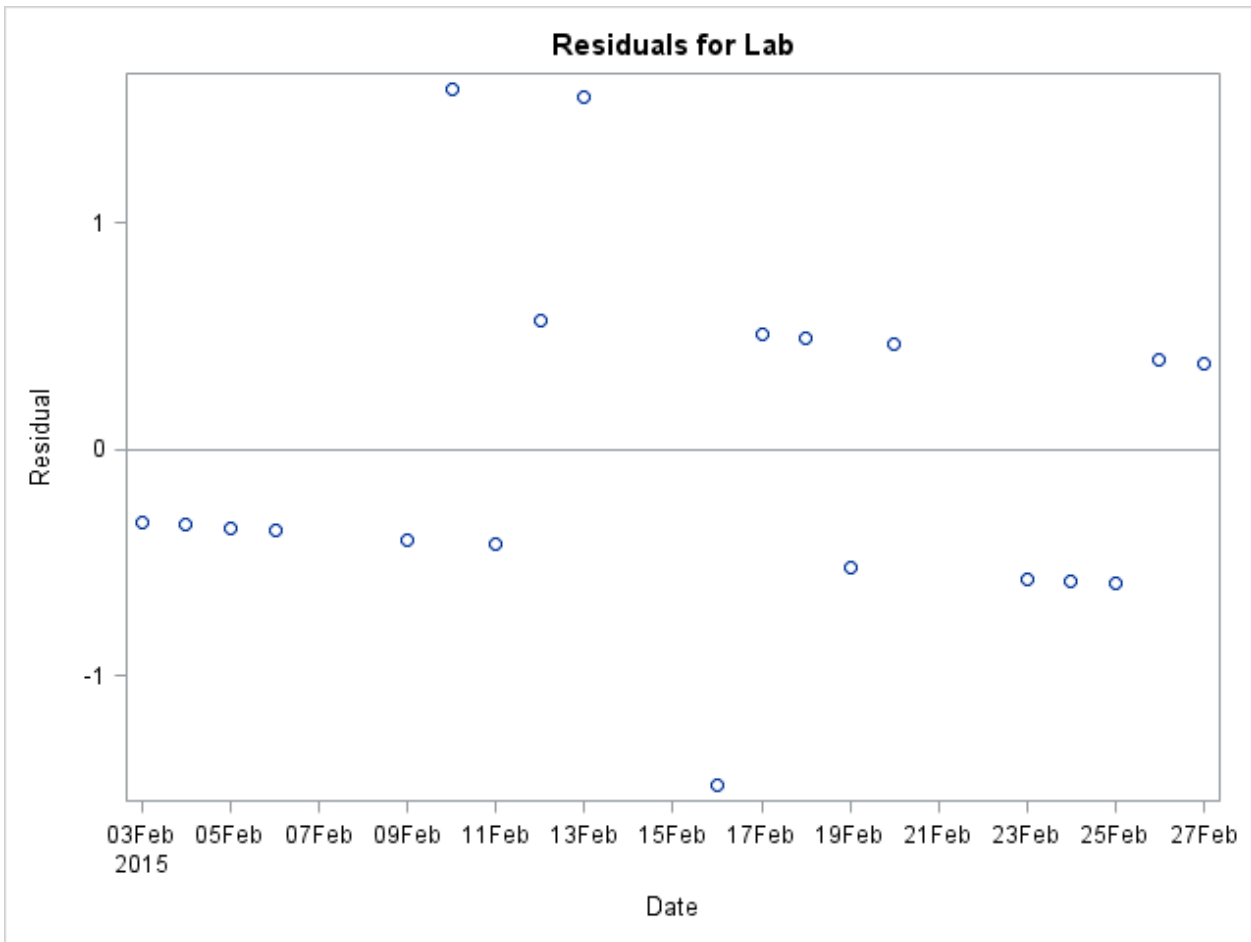
<b>Root MSE</b>	0.78849	<b>R-Square</b>	0.0156
<b>Dependent Mean</b>	33.47368	<b>Adj R-Sq</b>	-0.0423
<b>Coeff Var</b>	2.35556		

Parameter Estimates					
Variable	DF	Parameter Estimate	Standard Error	t Value	Pr >  t
<b>Intercept</b>	1	-214.95351	478.55502	-0.45	0.6590
<b>Date</b>	1	0.01234	0.02377	0.52	0.6104

### Linear Regression - Lab Line of best fit since February 1st

The REG Procedure  
Model: MODEL1  
Dependent Variable: Lab









**Linear Regression - LD**  
**Line of best fit since February 1st**

The REG Procedure  
 Model: MODEL1  
 Dependent Variable: LD

<b>Number of Observations Read</b>	18
<b>Number of Observations Used</b>	18

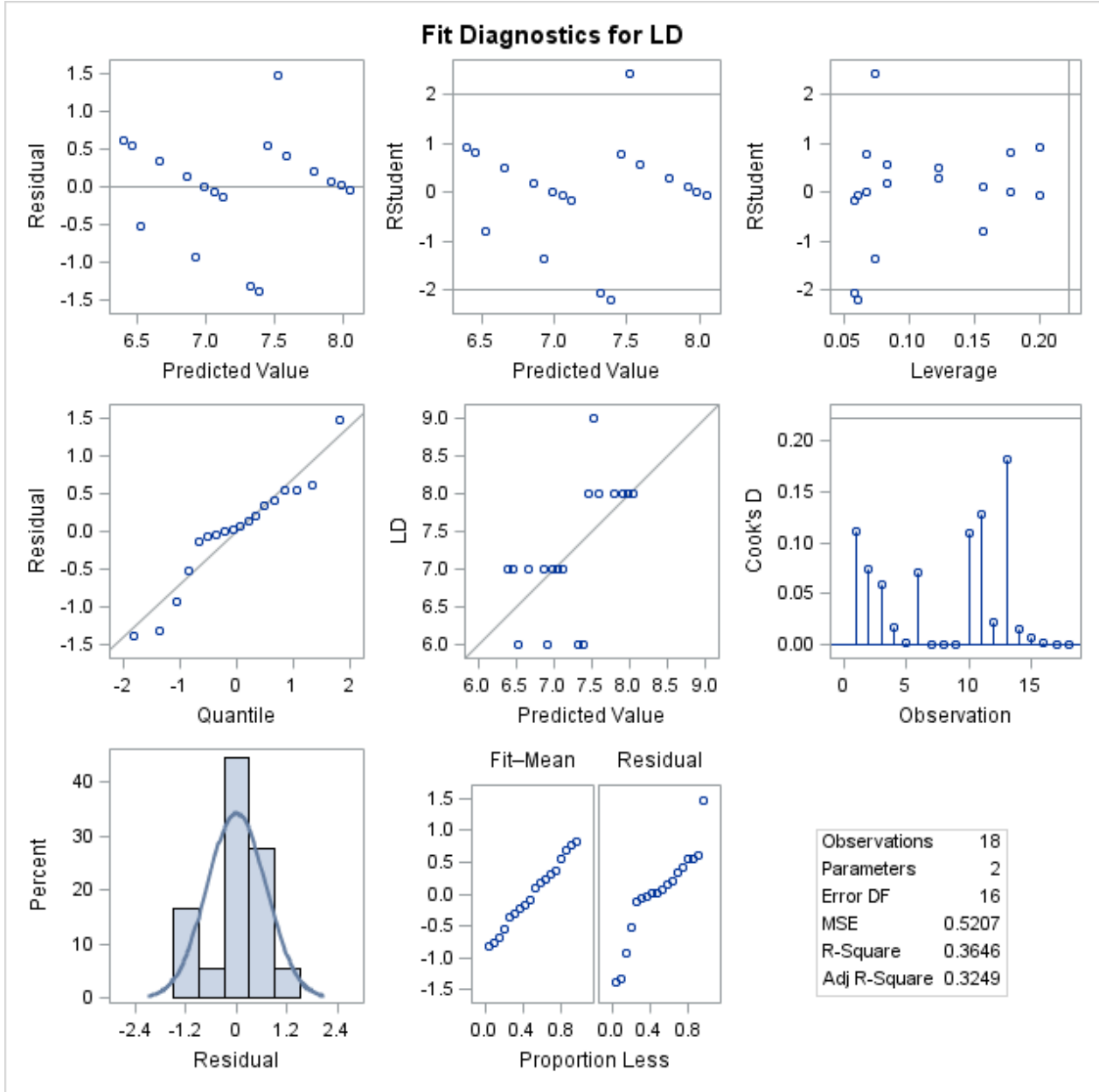
<b>Analysis of Variance</b>					
<b>Source</b>	<b>DF</b>	<b>Sum of Squares</b>	<b>Mean Square</b>	<b>F Value</b>	<b>Pr &gt; F</b>
<b>Model</b>	1	4.78008	4.78008	9.18	0.0080
<b>Error</b>	16	8.33103	0.52069		
<b>Corrected Total</b>	17	13.11111			

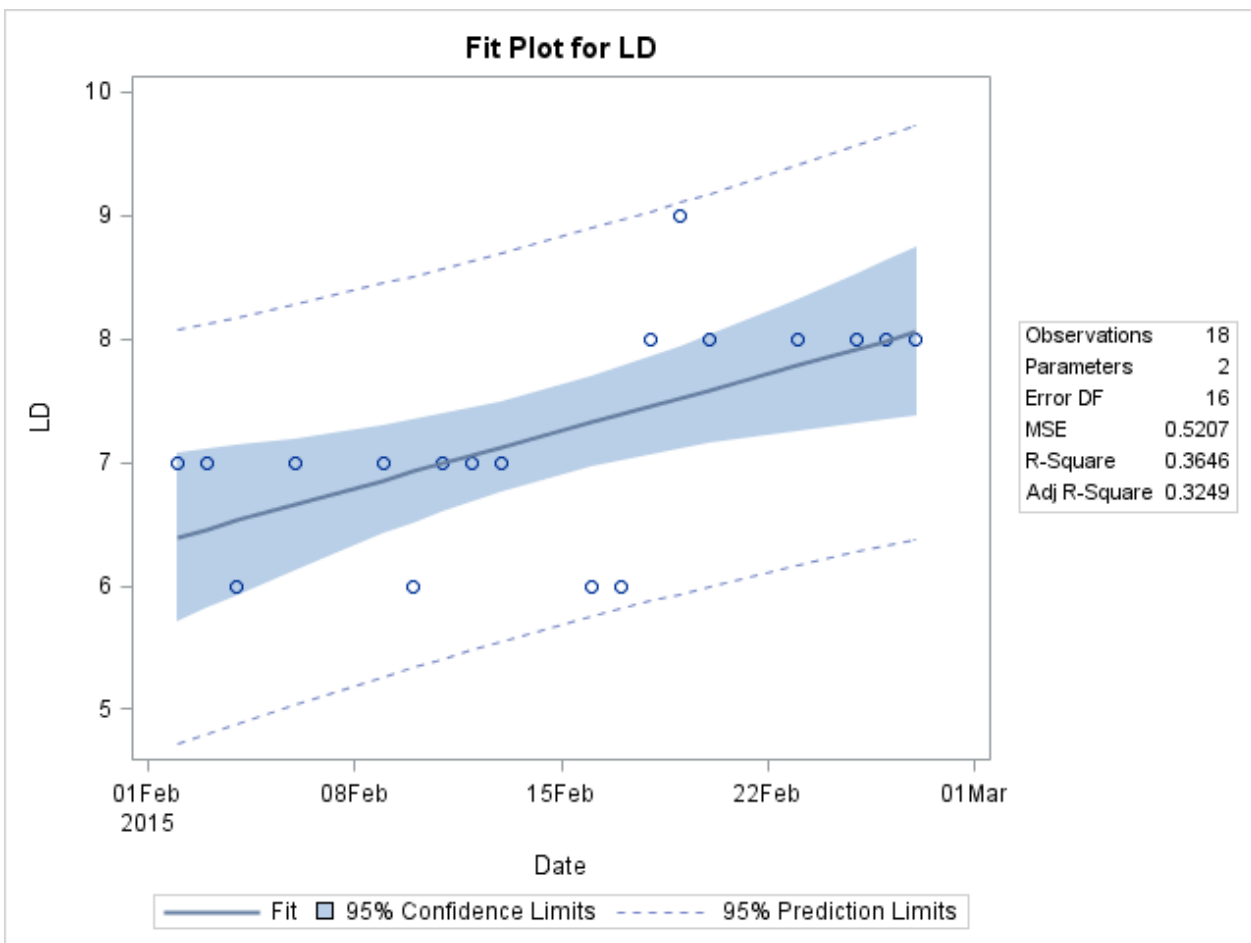
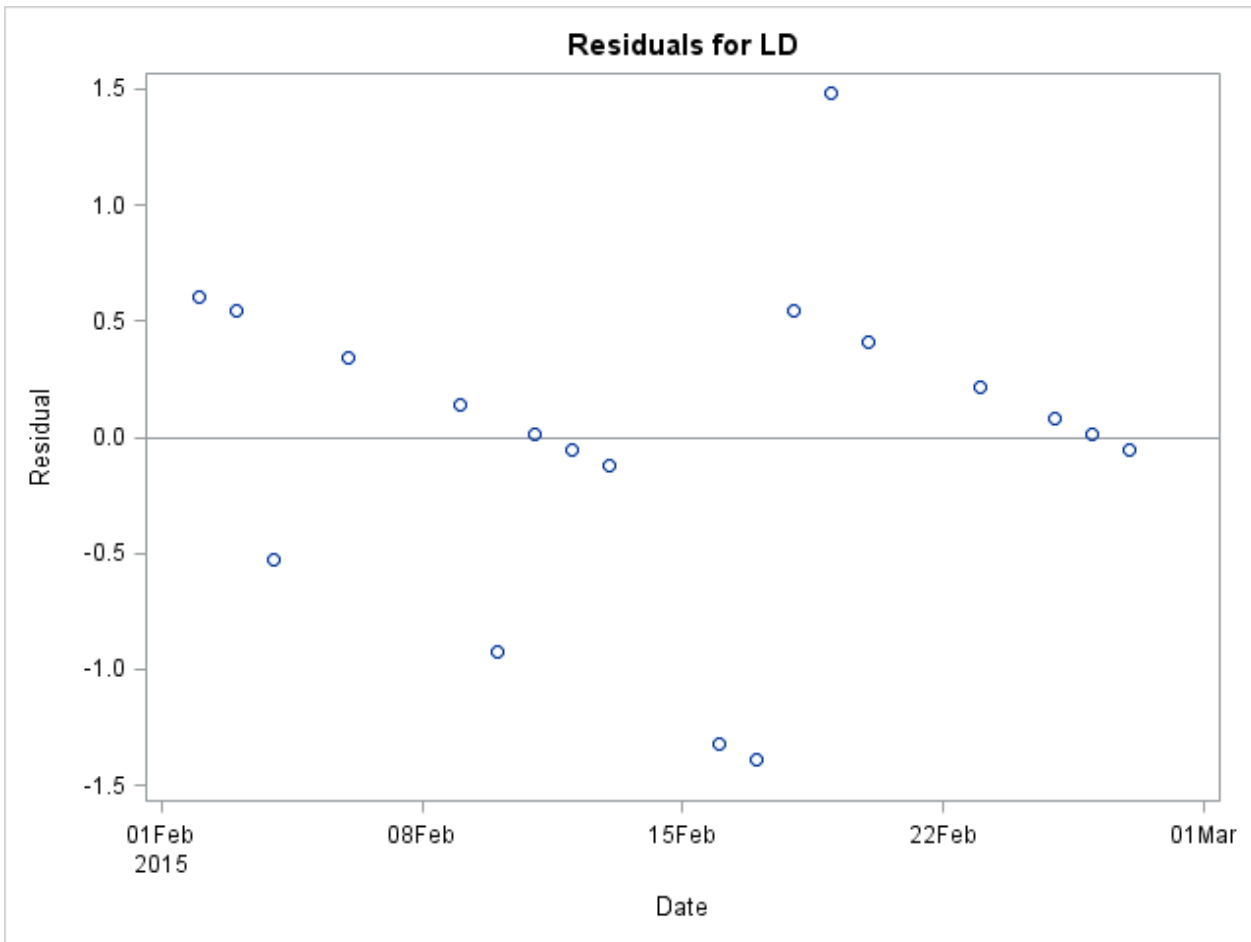
<b>Root MSE</b>	0.72159	<b>R-Square</b>	0.3646
<b>Dependent Mean</b>	7.22222	<b>Adj R-Sq</b>	0.3249
<b>Coeff Var</b>	9.99122		

<b>Parameter Estimates</b>					
<b>Variable</b>	<b>DF</b>	<b>Parameter Estimate</b>	<b>Standard Error</b>	<b>t Value</b>	<b>Pr &gt;  t </b>
<b>Intercept</b>	1	-1329.44168	441.15768	-3.01	0.0082
<b>Date</b>	1	0.06639	0.02191	3.03	0.0080

### Linear Regression - LD Line of best fit since February 1st

**The REG Procedure**  
**Model: MODEL1**  
**Dependent Variable: LD**







**Linear Regression - UKIP**  
**Line of best fit since February 1st**

The REG Procedure  
 Model: MODEL1  
 Dependent Variable: UK

<b>Number of Observations Read</b>	19
<b>Number of Observations Used</b>	19

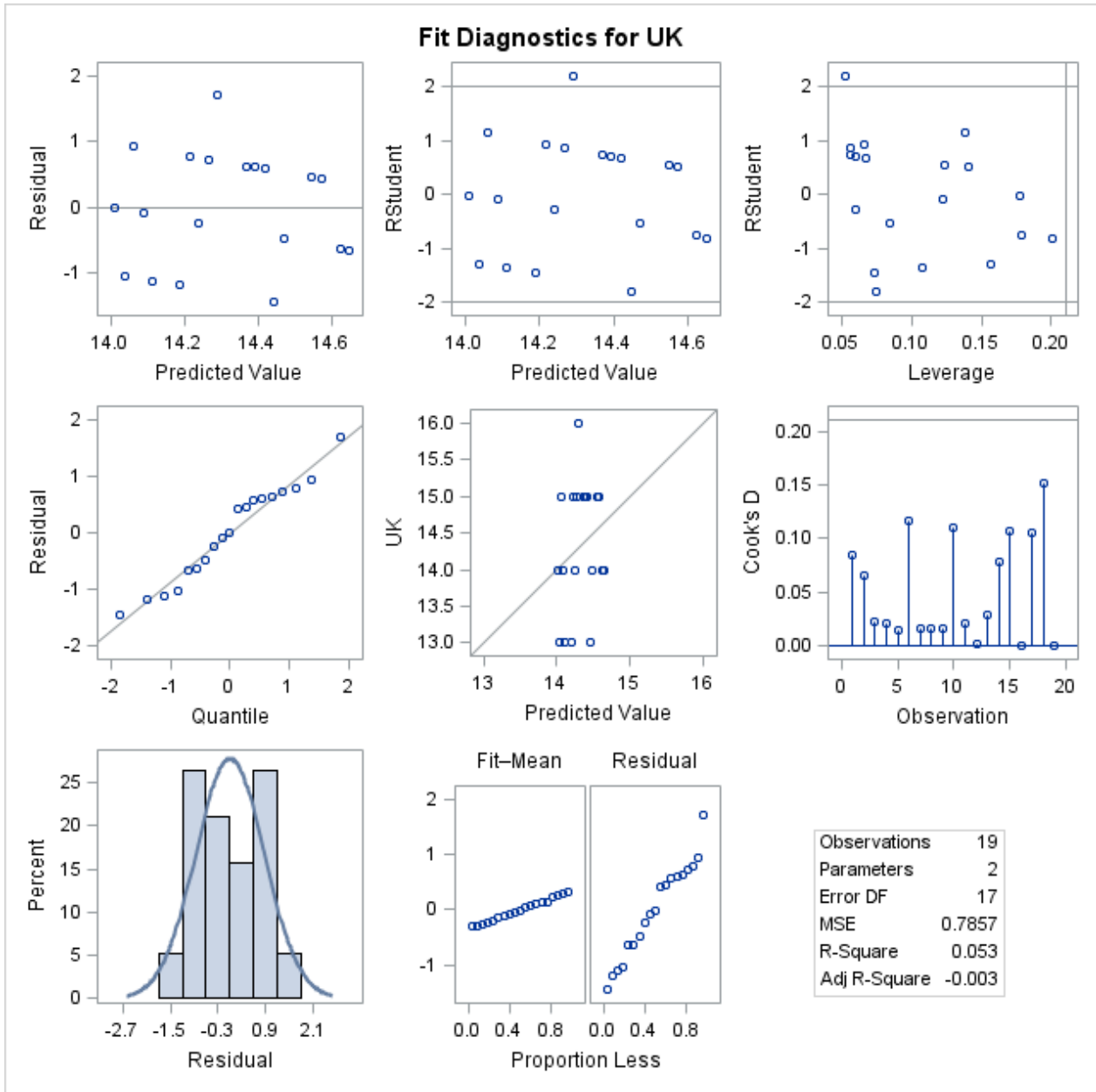
<b>Analysis of Variance</b>					
<b>Source</b>	<b>DF</b>	<b>Sum of Squares</b>	<b>Mean Square</b>	<b>F Value</b>	<b>Pr &gt; F</b>
<b>Model</b>	1	0.74800	0.74800	0.95	0.3429
<b>Error</b>	17	13.35726	0.78572		
<b>Corrected Total</b>	18	14.10526			

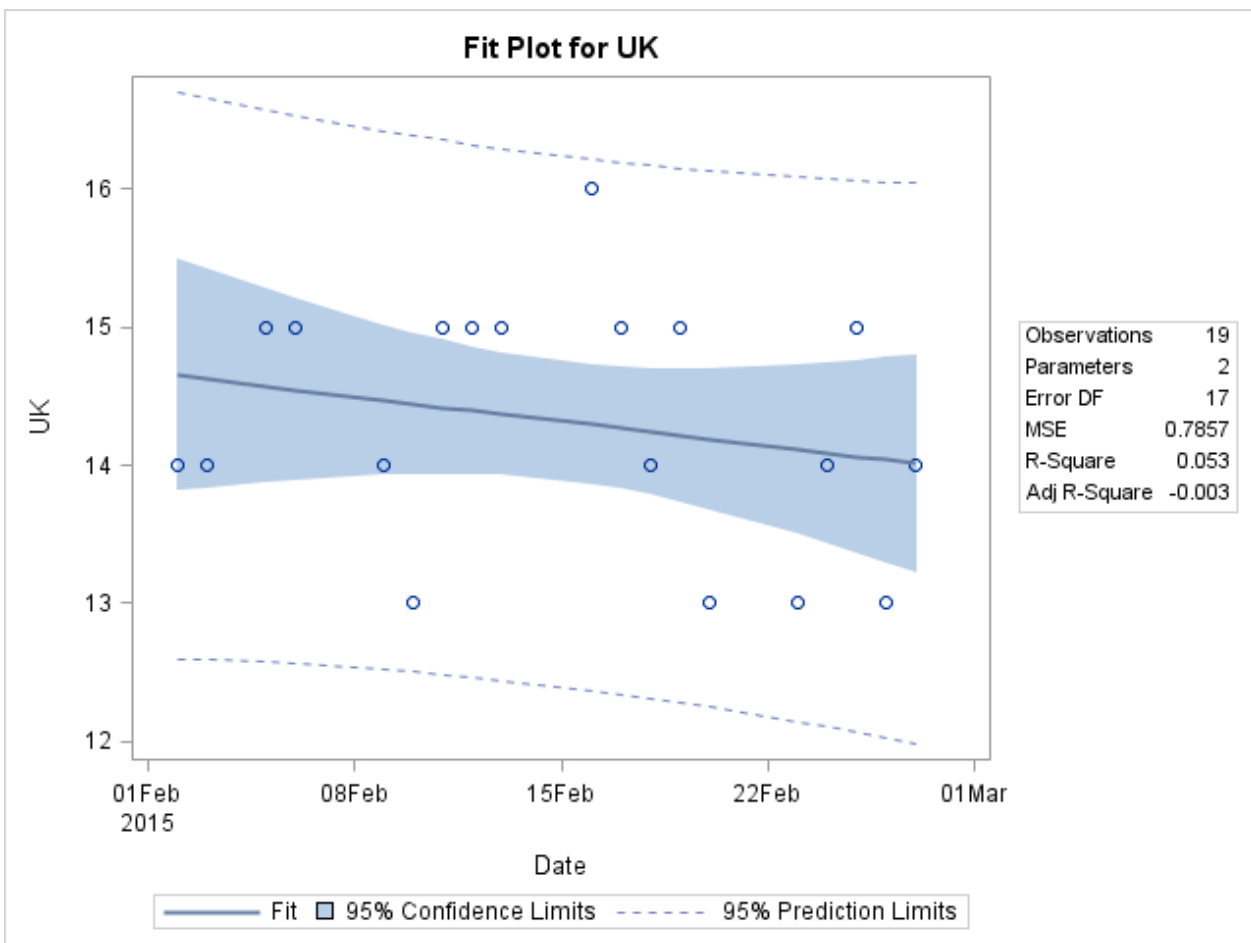
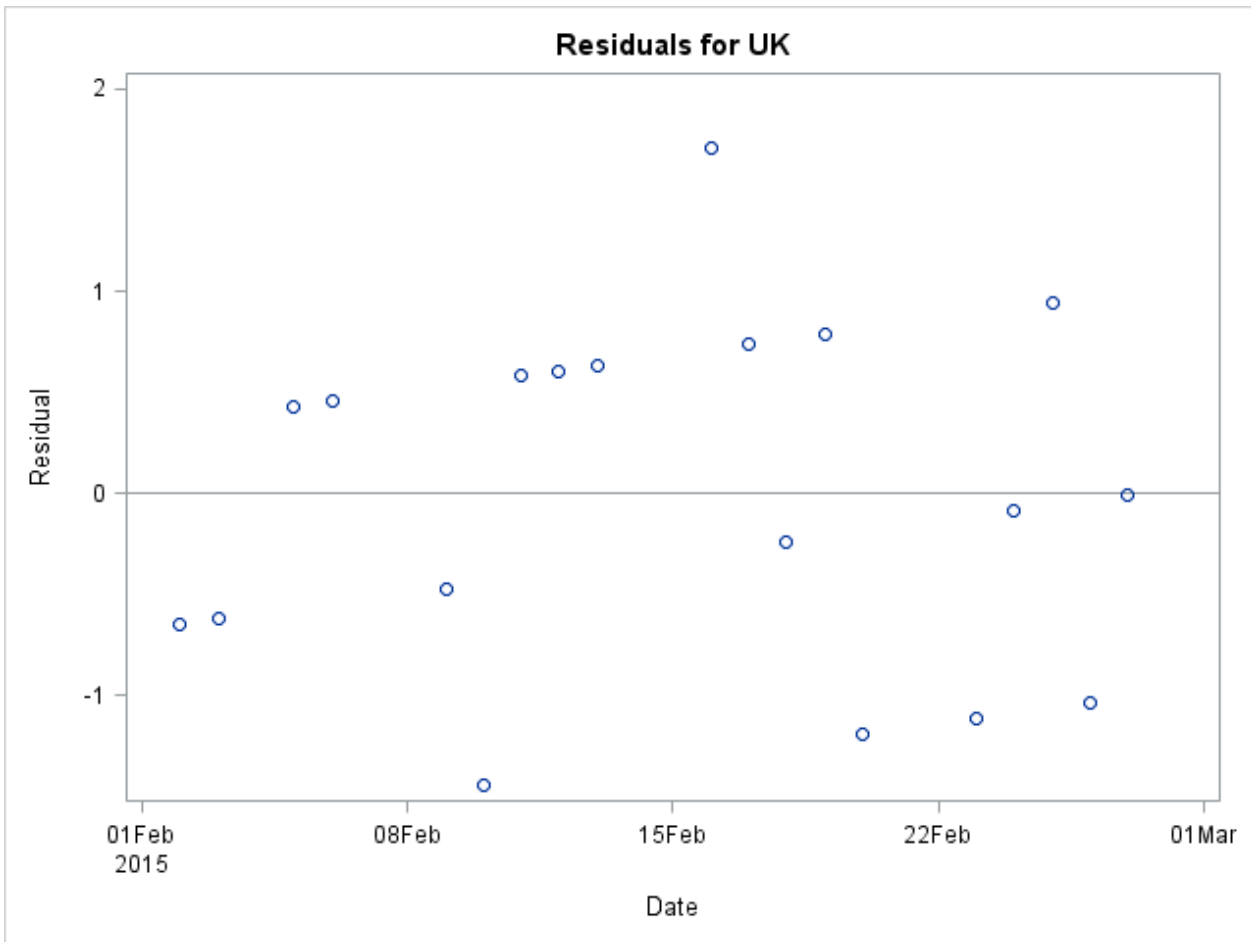
<b>Root MSE</b>	0.88641	<b>R-Square</b>	0.0530
<b>Dependent Mean</b>	14.31579	<b>Adj R-Sq</b>	-0.0027
<b>Coeff Var</b>	6.19183		

<b>Parameter Estimates</b>					
<b>Variable</b>	<b>DF</b>	<b>Parameter Estimate</b>	<b>Standard Error</b>	<b>t Value</b>	<b>Pr &gt;  t </b>
<b>Intercept</b>	1	528.04311	526.52064	1.00	0.3300
<b>Date</b>	1	-0.02552	0.02615	-0.98	0.3429

### Linear Regression - UKIP Line of best fit since February 1st

The REG Procedure  
Model: MODEL1  
Dependent Variable: UK









**Linear Regression - Green**  
**Line of best fit since February 1st**

The REG Procedure  
 Model: MODEL1  
 Dependent Variable: Gr

<b>Number of Observations Read</b>	18
<b>Number of Observations Used</b>	18

Analysis of Variance					
Source	DF	Sum of Squares	Mean Square	F Value	Pr > F
<b>Model</b>	1	3.26441	3.26441	6.26	0.0236
<b>Error</b>	16	8.34670	0.52167		
<b>Corrected Total</b>	17	11.61111			

<b>Root MSE</b>	0.72227	<b>R-Square</b>	0.2811
<b>Dependent Mean</b>	6.72222	<b>Adj R-Sq</b>	0.2362
<b>Coeff Var</b>	10.74446		

Parameter Estimates					
Variable	DF	Parameter Estimate	Standard Error	t Value	Pr >  t
<b>Intercept</b>	1	1111.32642	441.57252	2.52	0.0229
<b>Date</b>	1	-0.05486	0.02193	-2.50	0.0236

### Linear Regression - Green Line of best fit since February 1st

**The REG Procedure**  
**Model: MODEL1**  
**Dependent Variable: Gr**

